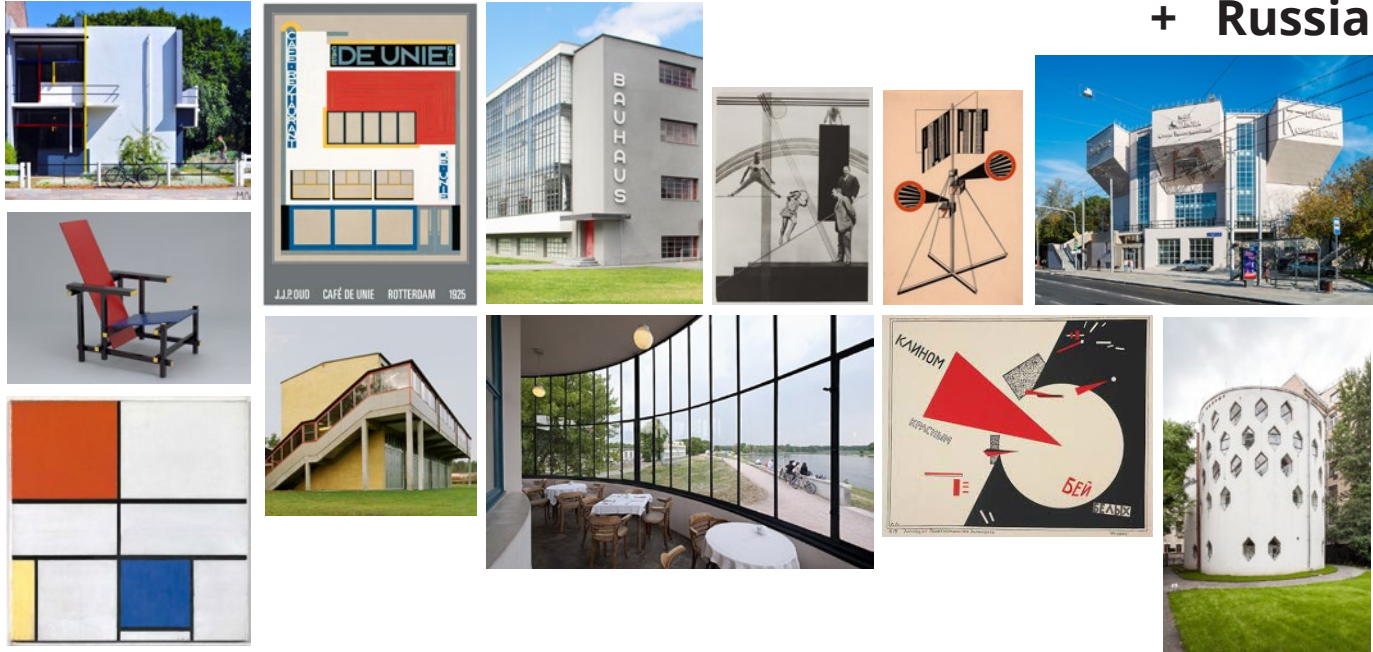


2019 Spring Term 3-Credit Travel Course

TOTAL ARCHITECTURES / ART AS LIFE IN:

The Netherlands Germany

+ Russia



2019 Taubman College Spring Travel Course

Peter Yi Walter Sanders Fellow
e-mail: peteryi@umich.edu

The **De Stijl** in the Netherlands, **Bauhaus** in Germany, and **Constructivism** in Russia were three interconnected movements in art, design, and architecture founded in the early 20th century. Each movement absorbed art into larger conversations with society – creating masterworks that influenced the trajectory of modern society and culture.

Total Architectures / Art as Life offers students the unique opportunity to travel to three European cultural centers to uncover interconnected ideas behind these movements through visits to museums, residences, housing, public buildings, and campuses. Concurrently, we'll look at how the production from these movements have permeated all facets of culture through visits and conversations with local schools and design offices.

The course travel is offered as two parts: West Europe and East Europe. In the West Europe segment of the trip, we will visit several cities by train within the Netherlands and Germany to seek out works of art, design, and architecture exemplifying **De Stijl**'s aesthetic of geometric and color abstraction, as well as follow the trail of **Bauhaus** on the occasion of its centenary celebration. In the East Europe segment, we'll look at the lasting significance of **Constructivist** utopianism through an immersive week-long stay in Moscow.

The figures of **De Stijl**, **Bauhaus**, and **Constructivism** all sought to combine art and architecture as a seamless project. In this spirit, we'll be gathering knowledge during our travels through photographing the architecture, museums, and historic landmarks we visit. The course includes a 2-day photography workshop in Ann Arbor prior to departure.

Course and Travel Dates:

5/07 - 5/8/19 : Photography Workshops

West Europe (17 Nights Total):

5/09 - 5/15/19: Netherlands

5/16 - 5/25/19: Germany

East Europe (6 Nights Total):

5/26 - 5/31/19: Moscow, Russia

Expected Travel Costs:

Air/Ground Travel:	1,650
Lodging/Meals:	1,400
Museum Admissions:	300
Visas/Insurance:	160
	= \$ 3,510

***Students have the option of traveling only to the Netherlands and Germany at a reduced cost of \$2,700**

***Taubman College students receive a \$1,000 scholarship for travel**

APPLICATIONS ARE DUE 2/7/2019

Total Architectures: Course and Travel Itinerary Overview

Total Architectures offers the unique opportunity to travel to three European cultural centers to experience the legacies of three modernist art and architecture movements. The course travel is offered as two parts: **West Europe** and **East Europe***. In the West Europe segment of the trip, we will visit several cities by train within the **Netherlands** and **Germany** to seek out works of art, design, and architecture exemplifying De Stijl's aesthetic of geometric and color abstraction, as well as follow the trail of Bauhaus on the occasion of its centenary celebration. In the East Europe segment, we'll look at the lasting significance of Constructivist utopianism through an immersive week-long stay in **Moscow, Russia**. This itinerary provides an idea of the overall schedule, as well as a sampling of the museums, architecture, and historic landmarks we will see.

*The course includes both segments by default, but students have the option of traveling only for the West Europe segment at a reduced cost.

Prior to Departure (5/7-5/8)

This course will foreground the use of photography as a documentation and design tool. We will kick off the course with a 2-day photography workshop in Ann Arbor, while continuing to practice and test out techniques throughout the duration of the trip. The final output for the course will be a printed photography catalog.



Eric Tabuchi, Atlas of Forms



Philipp Schaerer, Bildbauten



Filip Dujardin, Fictions

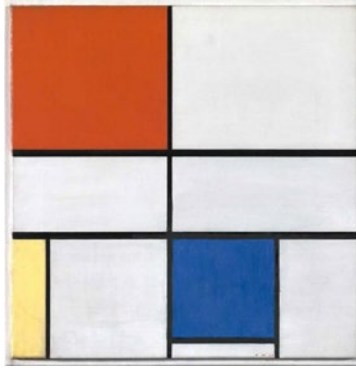
Segment One: West Europe

In the first segment of the trip, we will travel to Amsterdam, Netherlands and Berlin, Germany, using the two cities as a jumping off point to follow the trail of De Stijl and Bauhaus in several surrounding cities, all easily accessible by train. Simultaneously, we'll be able to stay in several cities and towns, sampling a wide variety of cultural offerings and urban/natural landscapes.

Travel to the Netherlands and Germany is visa-free for U.S. citizens, or permitted through obtaining a single Schengen Visa for citizens from countries requiring visas.

Netherlands (5/9 - 5/15)

Founded in the Netherlands in 1917, the **De Stijl** (translated as The Style) sought to create a modern aesthetic vocabulary that connected the arts across different mediums. Characterized by the use of rectilinear geometries and primary colors, the movement connected artists and designers such as Theo van Doesburg, Gerrit Rietveld, and Piet Mondrian, drawing formal connections across the visual arts, industrial design, and architecture.



Piet Mondrian, Composition C



Gerrit Rietveld, Red Blue Chair

We'll begin our travels via a 7.5 hour flight from Detroit to **Amsterdam**. Famous for its canals, museums chronicling centuries of creative arts, and dining and nightlife scenes, we will spend several days here exploring all the city has to offer, taking in its architectural sights while seeking out exemplary products of the De Stijl movement.



Canals in Amsterdam



Rijksmuseum, an encyclopedic museum chronicling Dutch art and history from the Middle Ages to the present day, Amsterdam



Stedelijk Museum, a modern art museum with a significant De Stijl collection, Amsterdam



From Amsterdam, we will also take a day trip to **Utrecht**, site of the most significant work of architectural adopting De Stijl geometric principles, the Schroder House.



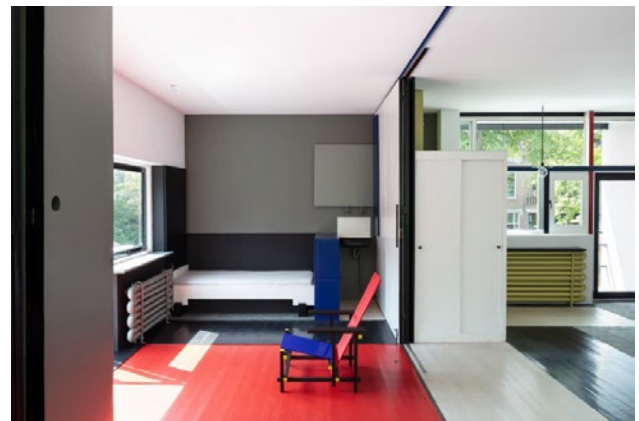
Reitveld Schroder House, Gerrit Rietveld, Utrecht



Utrecht, Netherlands



Centraal Museum Utrecht, with the largest Rietveld collection in the world and a range of De Stijl furniture and scale models.



Reitveld Schroder House interior, Gerrit Rietveld, Utrecht

Following 4 nights in Amsterdam, we will take a one hour train ride to **Rotterdam**. Rotterdam is the second largest city in the Netherlands and is experiencing a boom in modern architecture. We will use the opportunity to explore a range of contemporary works in the city.



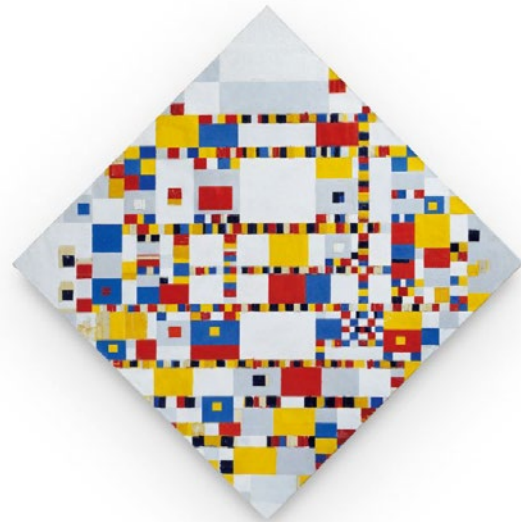
Rotterdam skyline and De Rotterdam by OMA



Café De Unie in Rotterdam, one of the oldest De Stijl works still existing, J.J.P. Oud.



In our three days exploring Rotterdam, we will also take a day trip to **The Hague**, seat of government of the Netherlands. While here, we'll be able to visit the Gemeentemuseum Den Haag, which features the largest collection of works in De Stijl in the Netherlands.



Mondrian, Victory Boogie Woogie at Gemeentemuseum



Germany (5/16 - 5/25)

Founded in Germany in 1919, the **Bauhaus** was an influential school that viewed design as a “Gesamtkunstwerk”, a “total” work of art in which all the arts (including fine art, graphic design, industrial design, and architecture) would be brought together. The Bauhaus was sequentially led by three directors: Walter Gropius, Hannes Meyer, and Ludwig Mies van der Rohe. The school’s spaces of production and artistic output can still be seen today on campuses in Berlin, Dessau, and Weimar.

2019 is also the one hundredth anniversary of the founding of Bauhaus. Dessau, the main site of the Bauhaus schools, is on New York Times’ 2019 Top 52 Places to Visit list. Cities around Germany will be holding special events to

Following seven nights in the Netherlands, we will take a one-hour flight to **Berlin**, the cosmopolitan and multi-faceted capital of Germany, and a perfect starting point for exploring the trail of Bauhaus in the nearby suburb of Bernau bei Berlin. Berlin, with its rich history and layers of change created by the World Wars, separation by the Berlin Wall, and subsequent reunification, combines modern development with traces of its turbulent history.



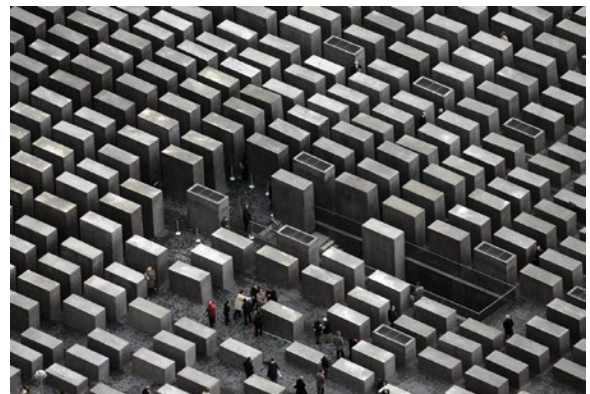
Berlin Cathedral on Museum Island, site of five world-renowned museums.



Berlin Wall



Reichstag building dome, meeting place of the German parliament, rehabilitated by Norman Foster, Berlin.



Holocaust Memorial, Peter Eisenman, Berlin.



ADGB Trade Union School, designed by Bauhaus architect Hannes Meyer, Bernau bei Berlin.

Following six nights in Berlin, we will take a one-and-a-half-hour train ride **Dessau**, site of the Bauhaus school during the 1920's and 30's.



The Bauhaus School Building, designed by Walter Gropius in Dessau, has UNESCO World Heritage status designation. The Building is designed as a total work of art embodying Bauhaus design principles. The interior fittings were made by designers in the Bauhaus Workshops.



Laszlo Moholy-Nagy, A 19



The studio building at the Bauhaus in Dessau housed students in 28 studio flats, and are available for stay by visitors.



Kornhaus restaurant in Dessau, designed by Carl Fieger in the Bauhaus style.

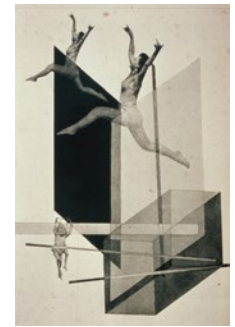


Bauhaus Costume Designs



Hannes Meyer, Houses with Balcony Access, a modern prototype for social housing.

After two nights exploring Bauhaus in Dessau, we will travel by train two hours to **Weimar**, where the Bauhaus school was originally founded. On the occasion of the Bauhaus centenary, both the new Bauhaus Museum Weimar and an exhibition on modernism at the Neues Museum Weimar will open on April 6.



Laszlo Moholy-Nagy, Human Mechanics



Bauhaus University Weimar, original site of the Bauhaus school. Both the De Stijl painter Theo van Doesburg and Russian Constructivist El Lissitzky visited in 1922.



Bauhaus Museum Weimar, scheduled to open on April 6, 2019.

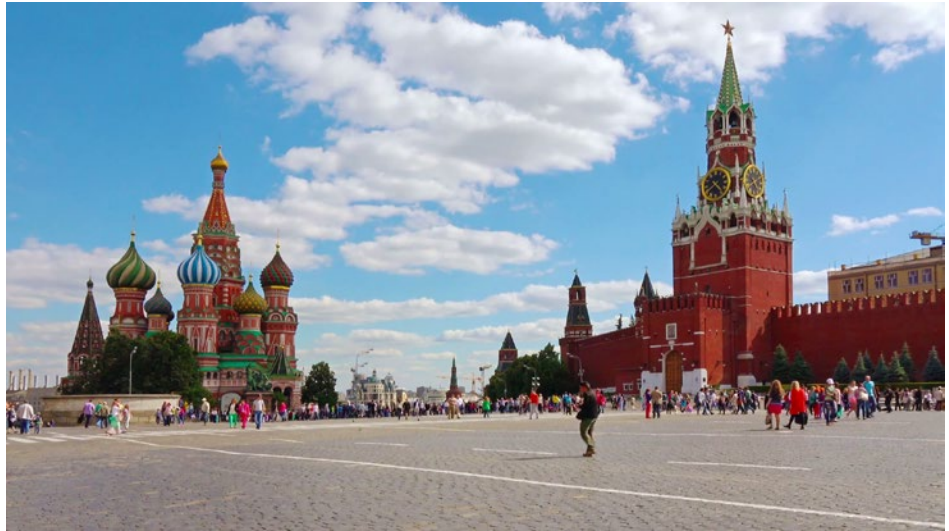
Segment Two: East Europe

In the second segment of the trip, we will spend a week living in Moscow, Russia, immersing ourselves in its arts scene as well as experiencing every aspect of its rich culture. Learning about Russian culture opens up new ways of understanding contemporary society. Living in Moscow for a week will allow us to move from being observers to participants in the city's day-to-day life, including having the time to enjoy Russian arts, cuisine, sights, and entertainment.

We'll reach Moscow via a three hour flight from Berlin. There is additional visa cost of around \$120 for US citizens for travel to Russia. Students in the course may opt out of this segment of the trip, and either return home to the US or continue their travels in Europe from Berlin.

Moscow (5/26 - 5/31)

Constructivism was an arts and architectural movement founded in 1913 as part of the Russian Avant Garde. Its mix of propaganda graphics, communal housing, and public buildings sought to place art and architecture as an actor in the formation of a new society. Many Constructivist buildings in Russia are in danger of demolition and might not be around to see in another few years, and our photographic catalog will partly serve as a form of preservation.



Red Square is Russia's seat of government – home to the Kremlin, official residence of the President of Russia, and St. Basil's Cathedral.

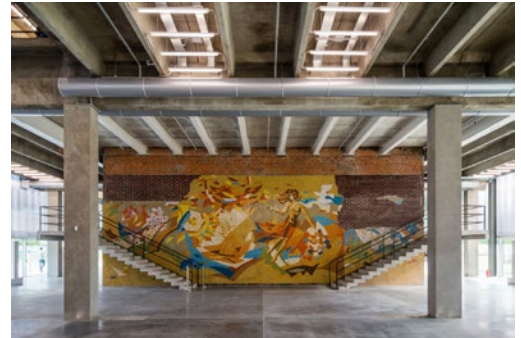


Zaryadye Park is a new park designed by a team led by Diller Scofidio + Renfro. The first public park built in Moscow for over 50 years, the design concept is arranged around four climatic zones, anchored by a dramatic floating bridge over the Moskva River.





The Garage Museum of Contemporary Art was designed by OMA, utilizing the former structure of a Soviet Modernist restaurant. The museum is situated in Gorky Park, which was planned by the Constructivist Konstantin Melnikov.



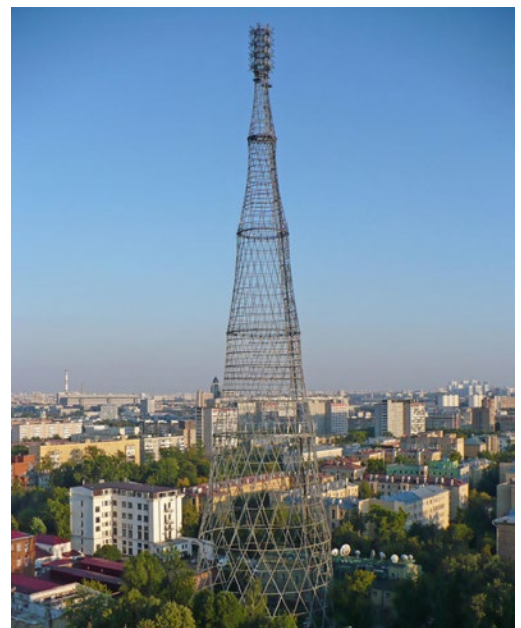
A dramatic example of Moscow's modernist housing designs, this building designed by Evgeny Stamo in 1972 combined nine hundred apartments with shops, a pharmacy, laundry room, post office, and other services.



Gustav Kucis, Radio-orator/ Propaganda Kiosk



The Shukhov tower is a diagrid structure and an icon of Constructivism, recently spared from demolition.





The social condenser was a typology invented by the Constructivists as a new type of programmed gathering space for the collective. Here, the Rusakov Worker's Club combines three theater forms into one stage.



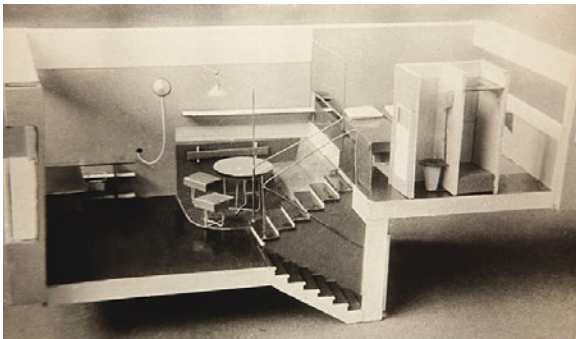
The Constructivist Konstantin Melnikov's house.



Zuev Workers' Club



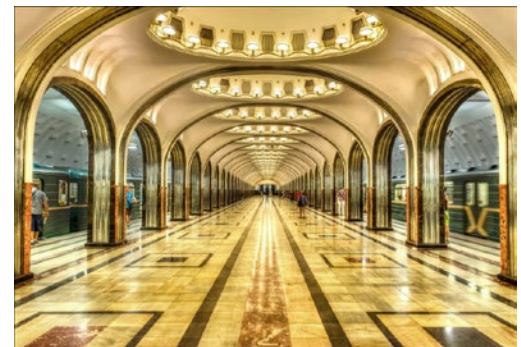
The Gosplan garage, also designed by Melnikov



Physical model of the Narkomfin unit design.



Designed by the Constructivist group OSA, the Narkomfin apartment building is a modern masterpiece that changed the way housing was conceived of. The building uses innovative interlock "L-shaped" units that reduced corridor access to every three levels, as well as a separate "communal block" that housed dining and child care facilities, connected by a raised bridge.

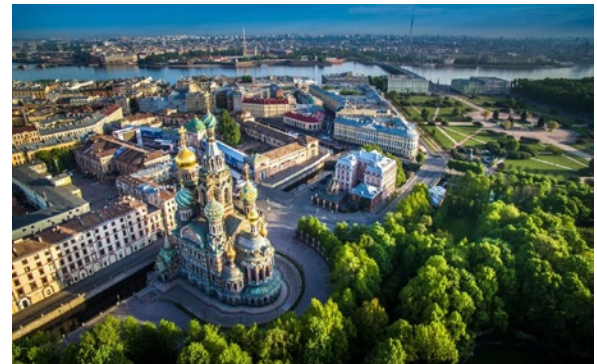


The Moscow Metro is famous for the opulent and unique designs of its many stations.



We'll also engage with the Strelka Institute, an experimental school in Moscow focused on how design impacts cities. In the summer, Strelka's courtyard hosts a public program. The popular Strelka Bar is located on the roof terrace of the building.

Take your travels further...



Although it is not part of the course, students are encouraged to take advantage of being in Russia to visit **St. Petersburg** after their stay in Moscow. St Petersburg can be reached by a half-day train or a short plane ride. The city is home to many incredible attractions, including the Hermitage Museum and Winter Palace.